

BATAVIA, OHIO

AL-5955 (FAA)

RNAV (GPS) RWY 22

BATAVIA / CLERMONT COUNTY (I69)

APP CRS 221°	Rwy Idg 3566
	TDZE 841
	Apt Elev 844

NA DME/DME RNP-0.3 NA. Use Cincinnati-Blue Ash altimeter setting, if not received, use Cincinnati Lunken Field altimeter setting and increase all MDAs 40 feet.

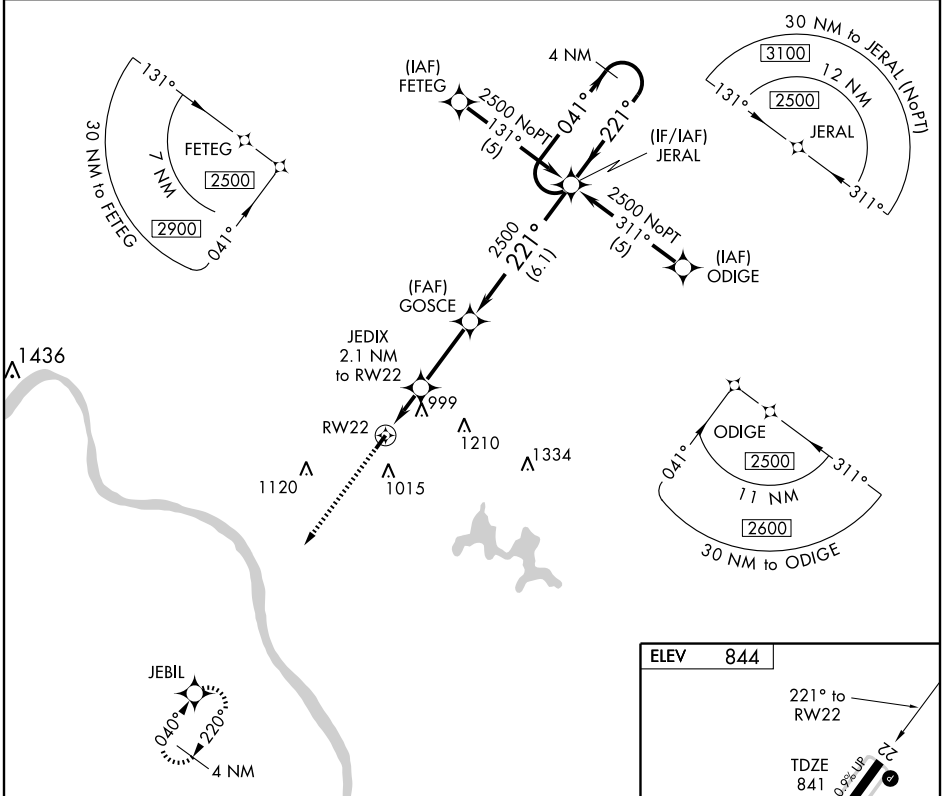
MISSED APPROACH: Climb to 2500 direct JEBIL and hold.

CINCINNATI-BLUE ASH
AWOS-3
118.475

CINCINNATI APP CON
121.0 257.725

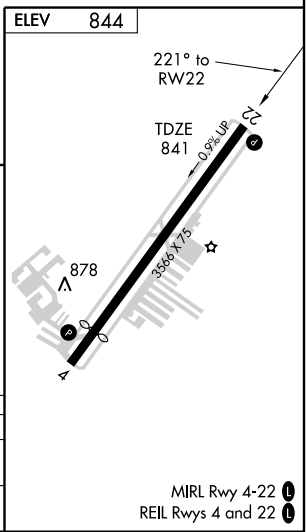
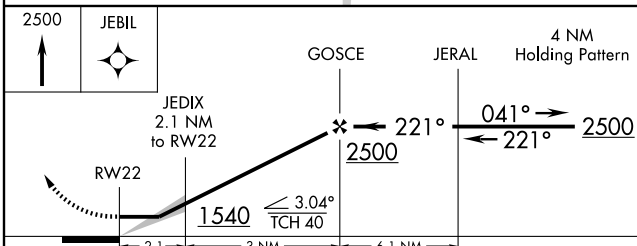
CLNC DEL
124.9

UNICOM
122.975 (CTAF)



EC-2, 03 JUN 2010 to 01 JUL 2010

EC-2, 03 JUN 2010 to 01 JUL 2010



CATEGORY	A	B	C	D
LNVA MDA	1300-1	459 (500-1)	1300-1½ 459 (500-1½)	NA
CIRCLING	1360-1	516 (600-1)	1360-1½ 516 (600-1½)	NA

BATAVIA, OHIO
Orig 09127

39°05'N - 84°13'W

RNAV (GPS) RWY 22

WAAS CH 61300 W29A	APP CRS 296°	Rwy Idg TDZE Apt Elev	5500 619 633
--	------------------------	-----------------------------	---

RNAV (GPS) RWY 29

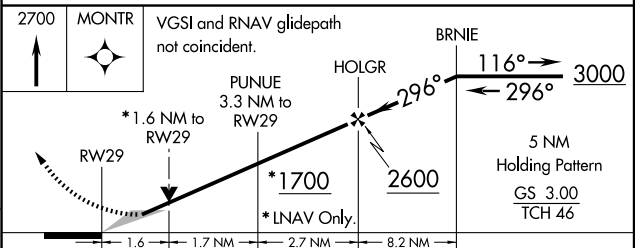
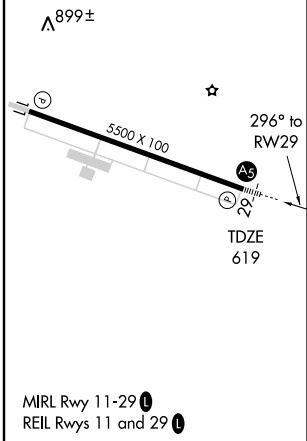
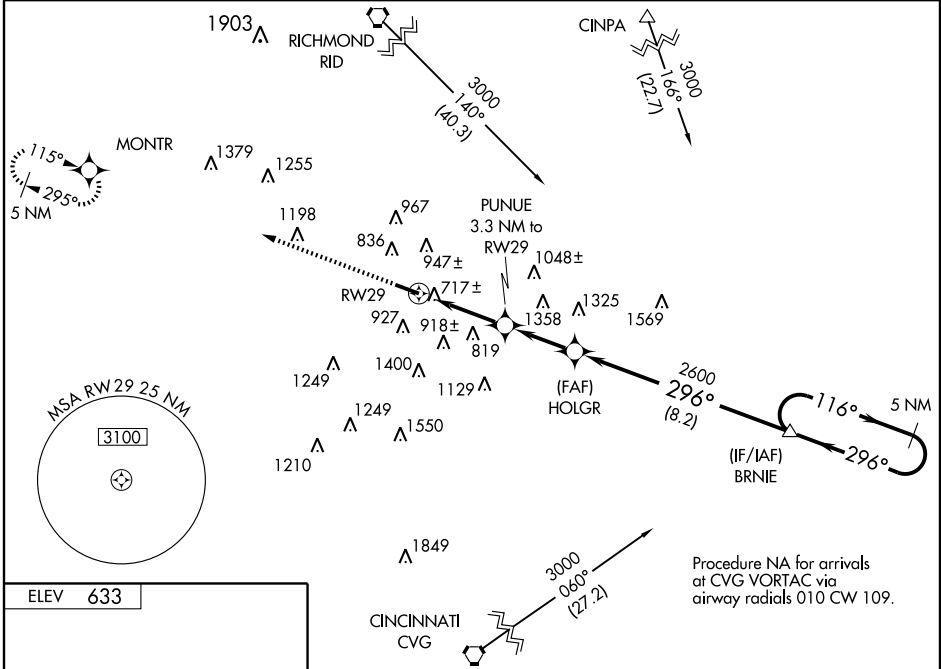
HAMILTON/BUTLER COUNTY RGNL (H.A.O)

If local altimeter setting not received, use Cincinnati Muni Airport-Lunken Field altimeter setting and increase all DAs 59 feet and all MDAs 60 feet. VDP NA when using Cincinnati Muni Airport-Lunken Field altimeter setting. Baro-VNAV NA when using Cincinnati Muni Airport-Lunken Field altimeter setting. For uncompensated Baro-VNAV systems, LNAV/VNAV NA below -16°C (4°F) or above 48°C (118°F). For inoperative MALS, increase LPV visibility to 1½ all Cats and LNAV Cat A/B visibility to 1. DME/DME RNP-0.3 NA.



MISSED APPROACH:
Climb to 2700 direct MONTR and hold.

ASOS 121.425	CINCINNATI APP CON 121.0 257.725	CLNC DEL 126.25	UNICOM 123.05 (CTAF)
------------------------	--	---------------------------	--------------------------------



CATEGORY	A	B	C	D
LPV DA		944-¾	325 (400-¾)	
LNAV/VNAV DA		1128-1¼	509 (500-1¼)	
LNAV MDA	1140-¾	521 (600-¾)	1140-1 521 (600-1)	1140-1¼ 521 (600-1¼)
CIRCLING	1200-1 567 (600-1)	1280-1 647 (700-1)	1300-1¼ 667 (700-1¼)	1320-2¼ 687 (700-2¼)

EC-2, 03 JUN 2010 to 01 JUL 2010

EC-2, 03 JUN 2010 to 01 JUL 2010

FALMOUTH, KENTUCKY

AL-6864 (FAA)

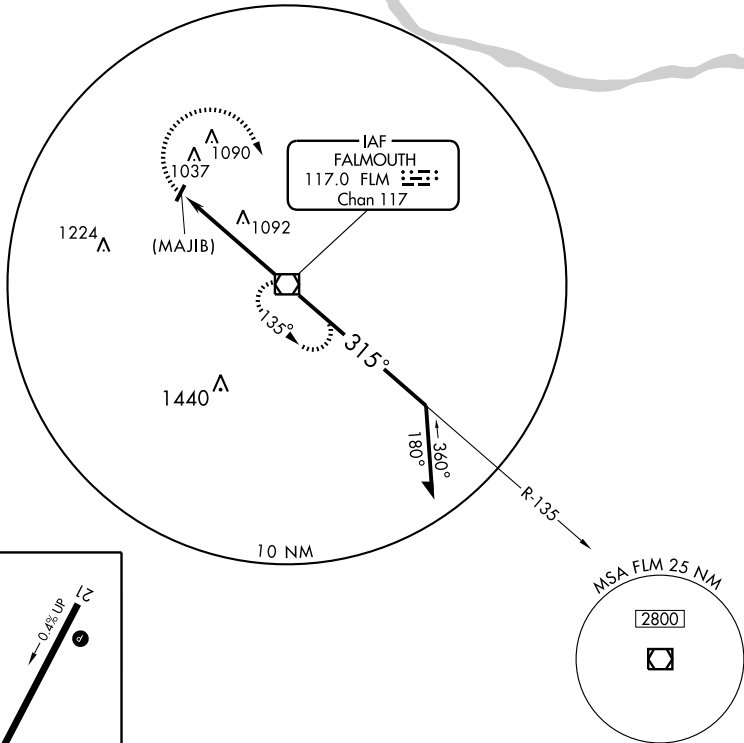
VOR or GPS-A

FALMOUTH/GENE SNYDER (K62)

VOR/DME FLM 117.0 Chan 117	APP CRS 315°	Rwy Idg TDZE Apt Elev 898	N/A N/A 898
--	------------------------	--	--------------------------

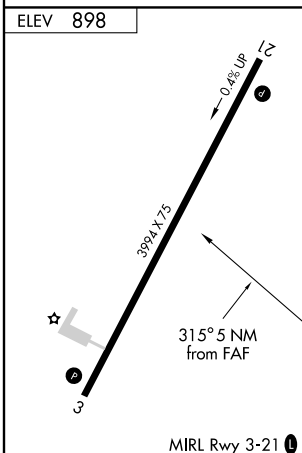
<p>▼ Use Cincinnati/Northern Kentucky Intl altimeter setting.</p> <p>▲NA</p>	<p>MISSED APPROACH: Climbing right turn to 2500 direct FLM VOR/DME and hold.</p>
--	--

<p>AWOS-3 123.825</p>	<p>CINCINNATI APP CON 121.0 257.725</p>	<p>UNICOM 122.7 (CTAF)</p>	<p>122.9 0</p>
----------------------------------	--	---------------------------------------	------------------------------



SE-1, 03 JUN 2010 to 01 JUL 2010

SE-1, 03 JUN 2010 to 01 JUL 2010



FAF to MAP 5 NM					
Knots	60	90	120	150	180
Min:Sec	5:00	3:20	2:30	2:00	1:40
CATEGORY	A	B	C	D	
CIRCLING	1500-1	602 (700-1)	1500-1 ^{3/4} 602 (700-1 ^{3/4})	1500-2	602 (700-2)

FALMOUTH, KENTUCKY
Amdt 2A 10098

38° 42'N-84° 24'W

VOR or GPS-A