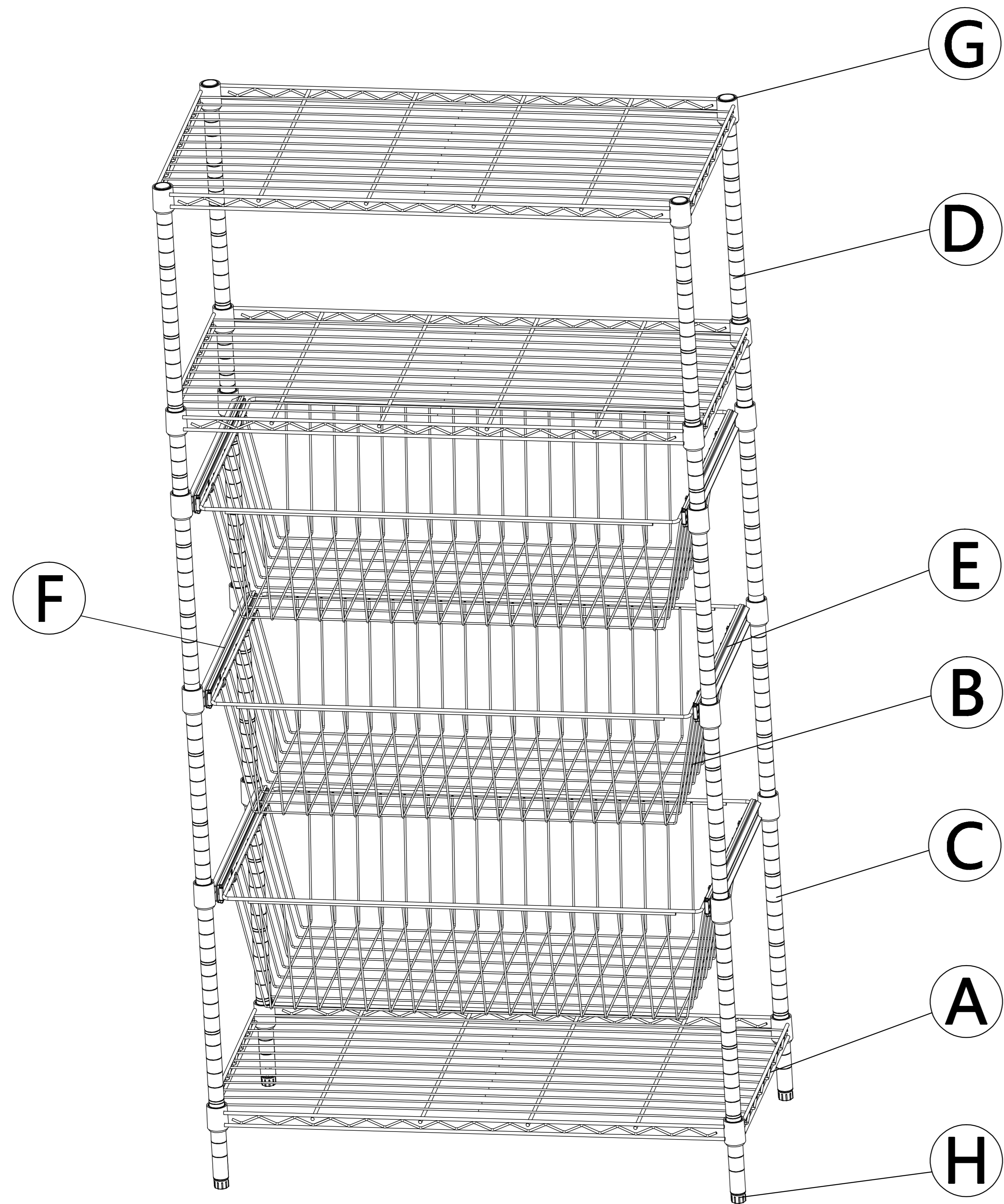
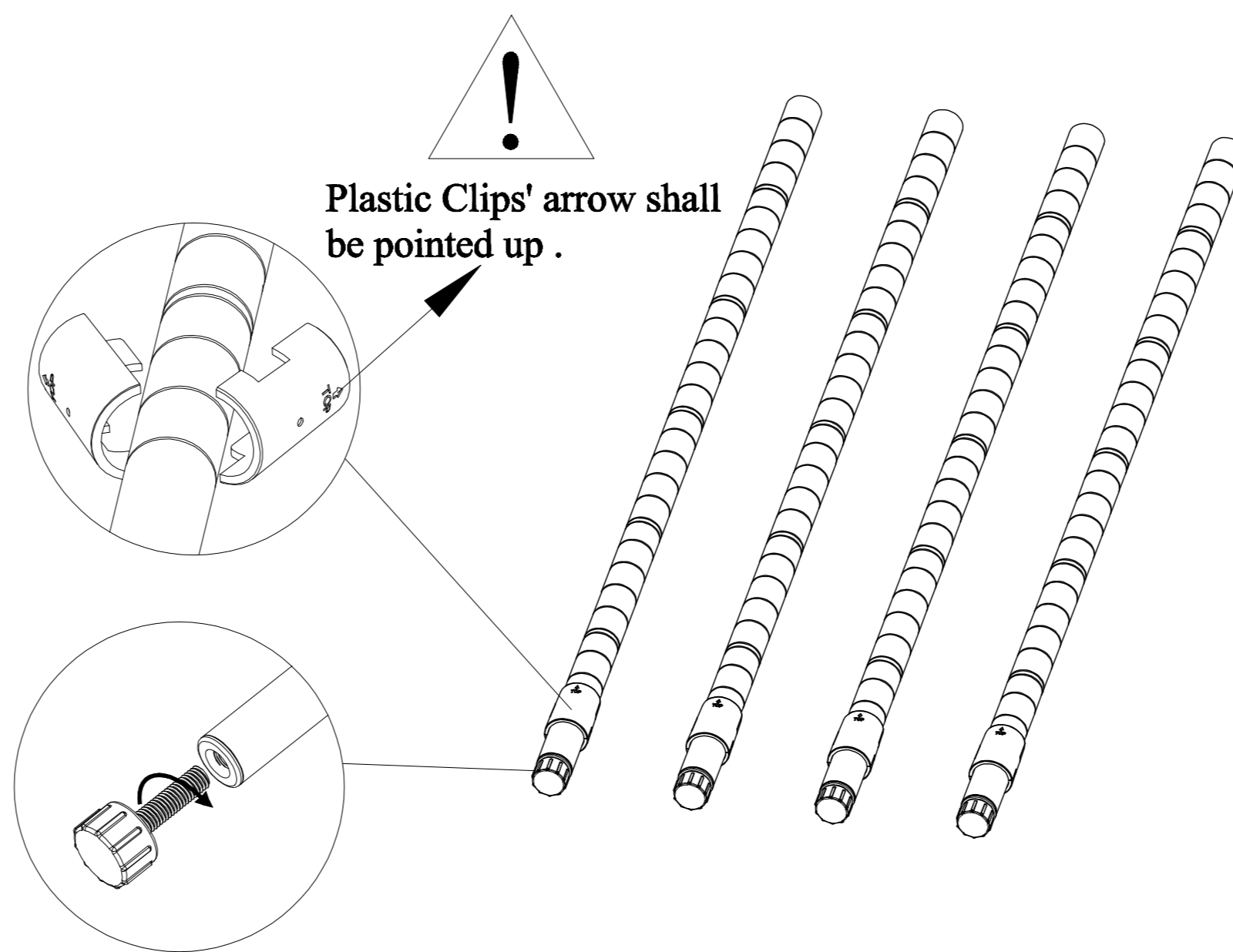


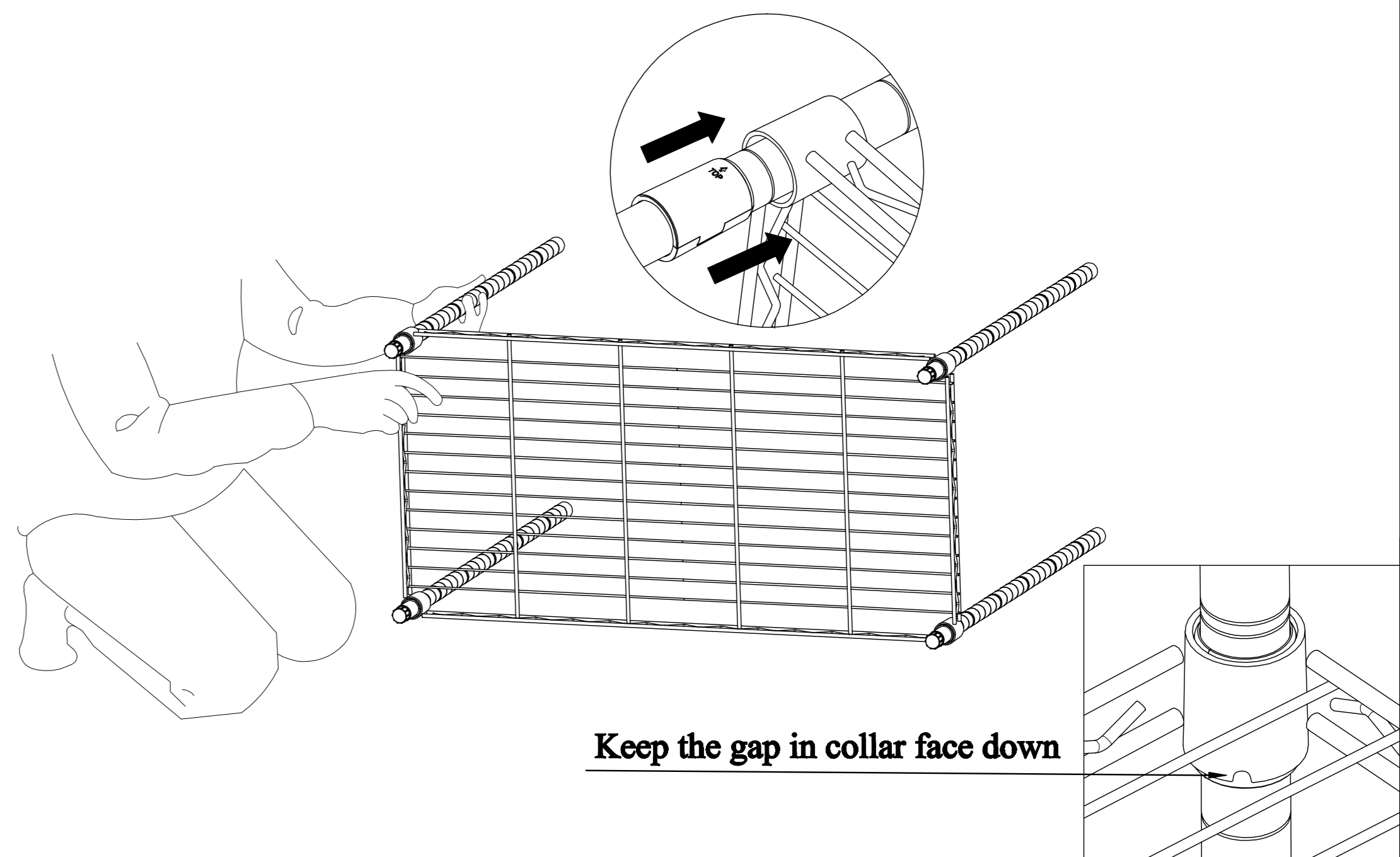
Assembly Steps:



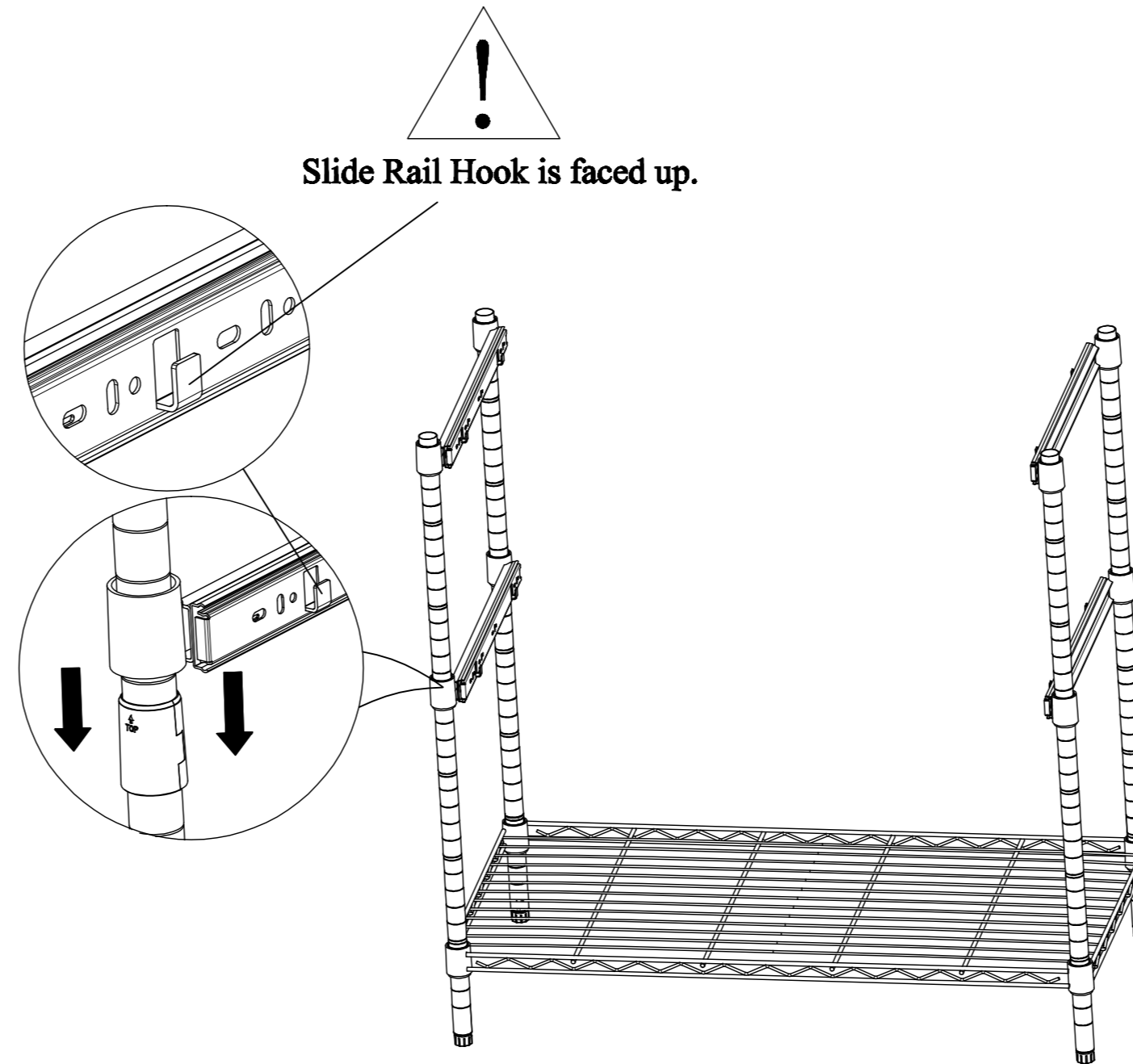
1 Screw the Leveling Feet (H) (or Casters if purchased separately) into the bottom of each Lower Poles (C) as shown. Snap the Plastic Clips (G) on the grooves of each Lower Pole at or near the bottom of the lower poles (same location on each pole). Make sure the arrow of all Plastic Clips is pointed UP.



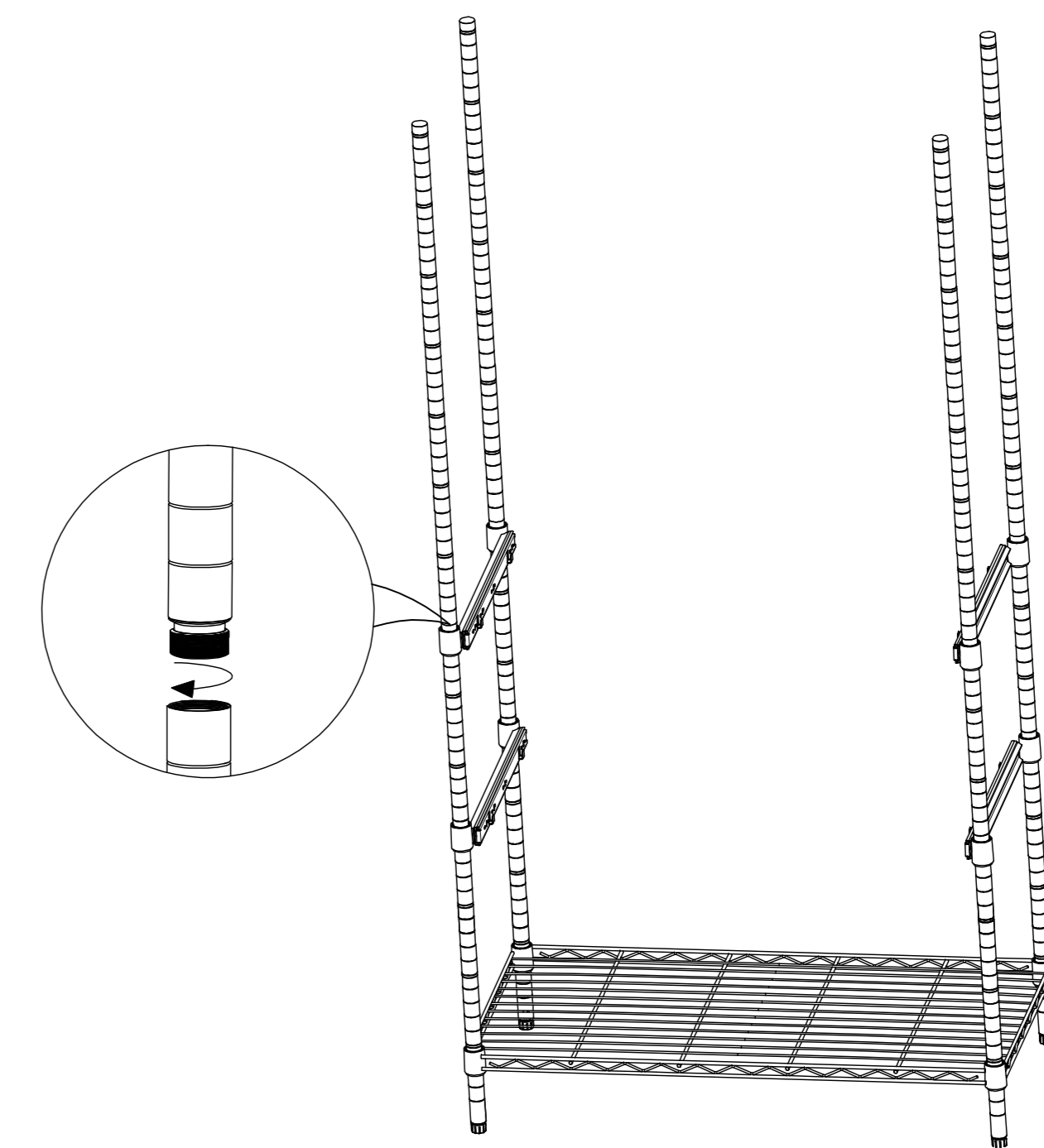
2 Please make sure the Wire Shelf (A) is positioned correctly (as shown). Hold the shelf on its side and slide the four Lower Poles (C) through the bottom of the shelf through the holes in the corner until they fit snugly. Once the four Lower Poles are securely through the holes, set the shelf upright.



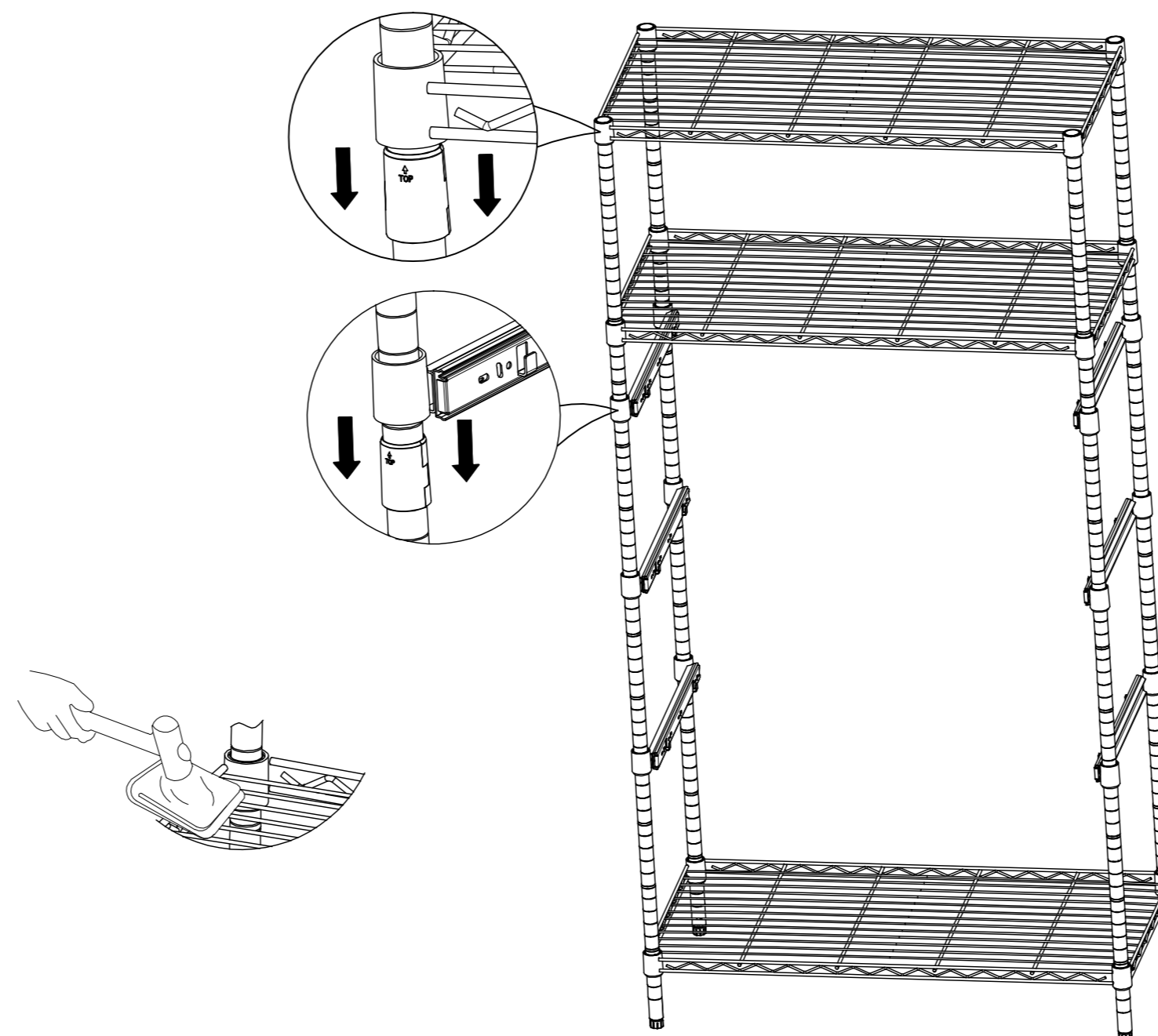
3 NOTE: The exact location of the pull-out bins and the shelves is the customer's preference. We recommend you consider what will be in the bins / how they will be used and the spacing you will need before assembling the unit completely. Snap 16 Plastic Clips (G) on the pole grooves of the 4 Lower Poles. Then put on two pieces of the Right Slide Rail (E) and the Left Slide Rail (F).



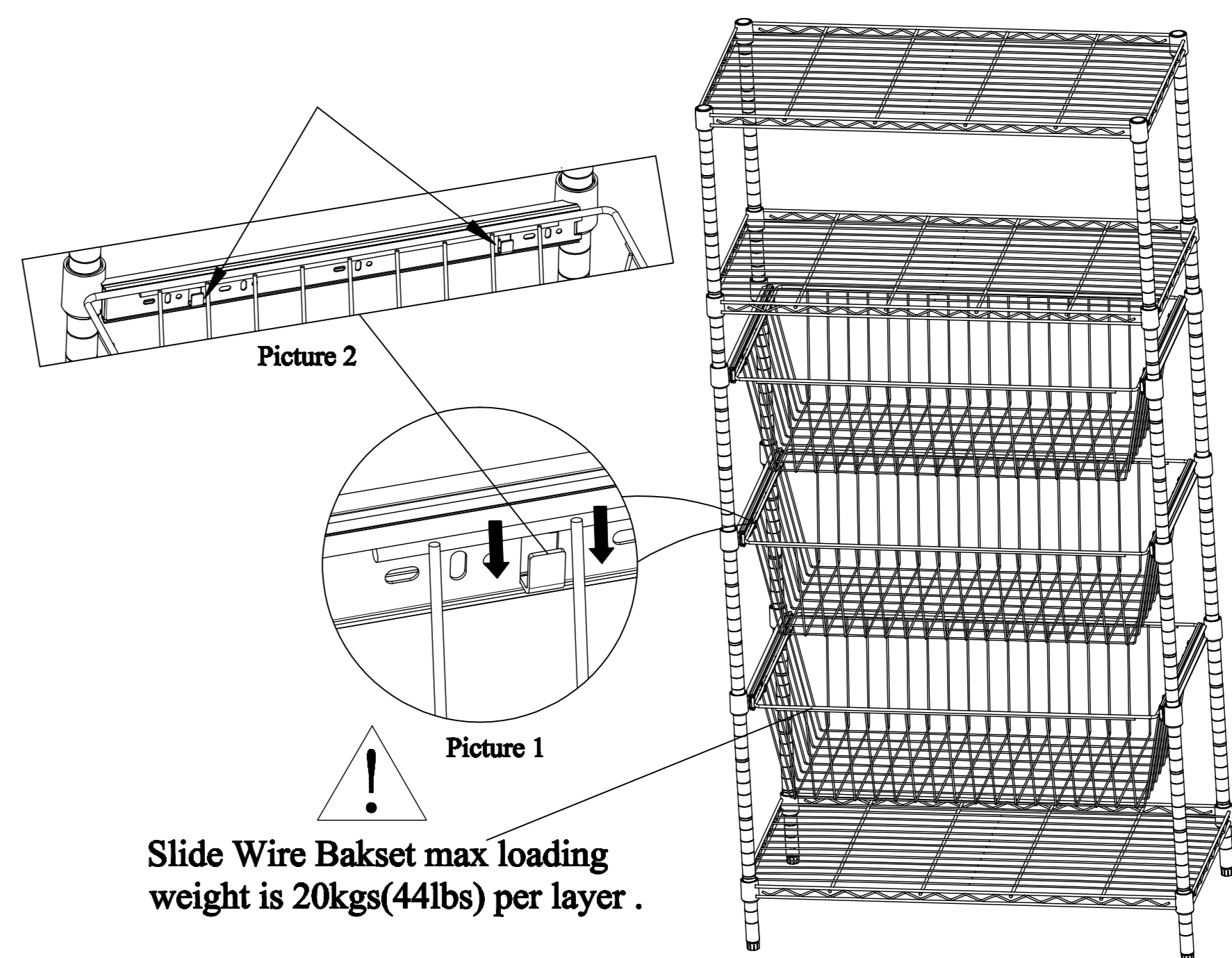
4 Screw Upper Poles (D) into the Lower Poles as shown.



5 Snap 8 Plastic Clips (G) onto the pole grooves of the 4 Upper Poles. Assemble the Right Slide Rail and Left Slide Rail (as done in Step 3). Snap 8 Plastic Clips onto the 4 Upper Poles for a shelf. Slide the Wire Shelf (A) onto the Upper Poles. Snap 8 Plastic Clips onto or near the top of the Upper Poles. Slide the Wire Shelf (A) onto the Upper Poles. Firmly push down or tap gently with a rubber mallet to ensure all shelves are securely on the Plastic Clips.



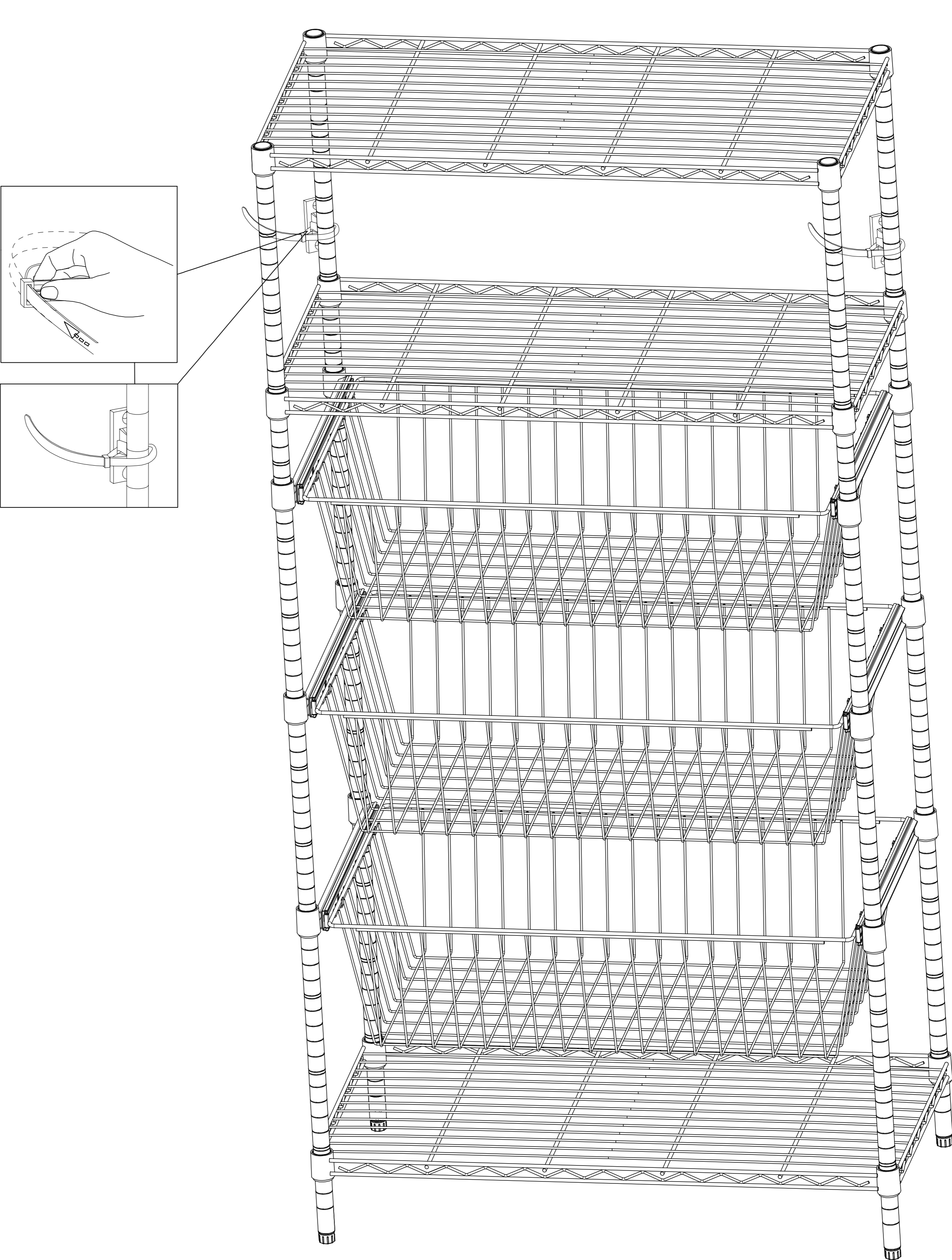
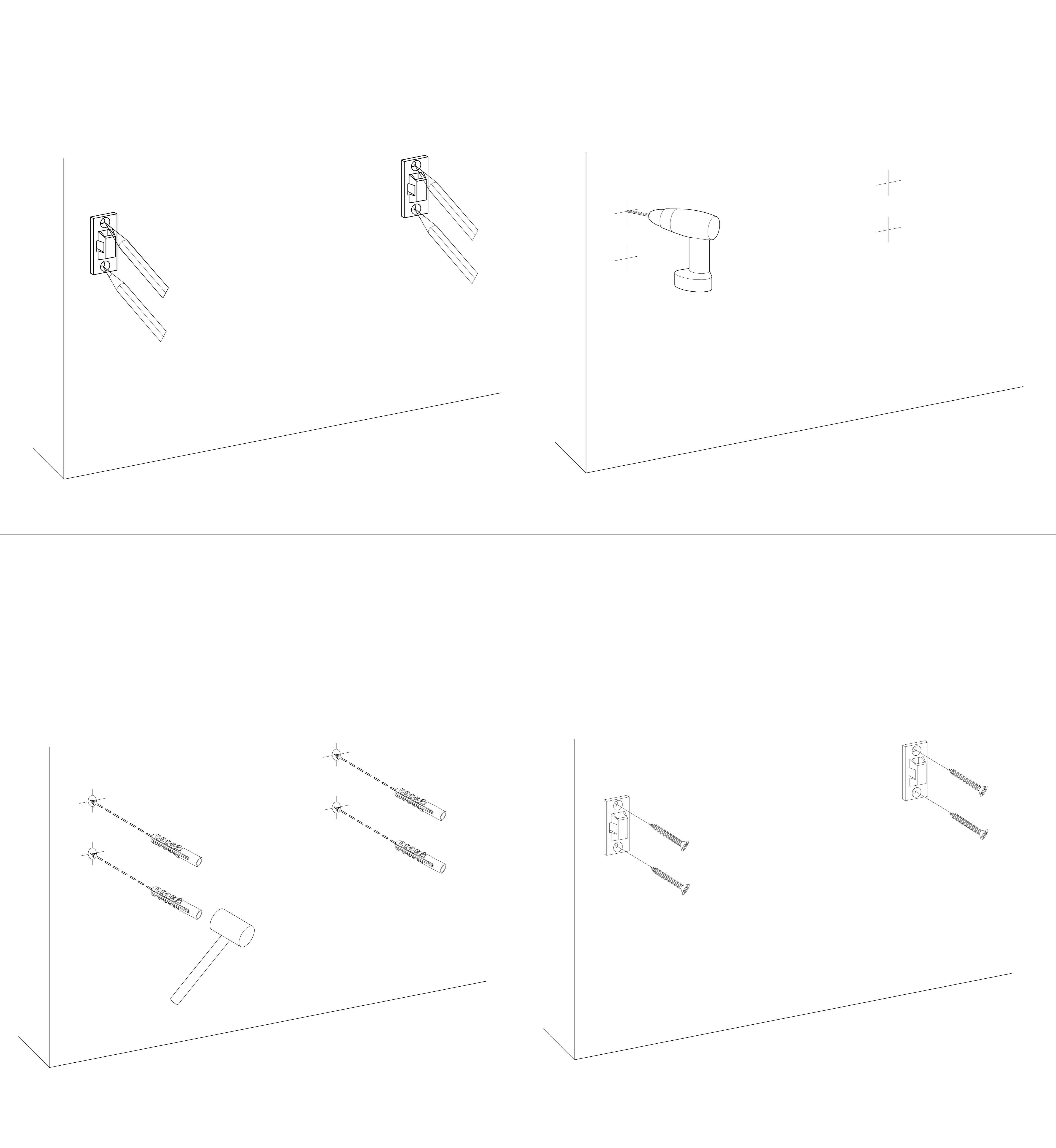
6 Assemble the three Wire Baskets (B) into the Right and Left Slide Rails. Put the basket's short frame into the hook as shown in picture .The hook should be in the basket of the first wire and the eighth wire as shown in picture 2.

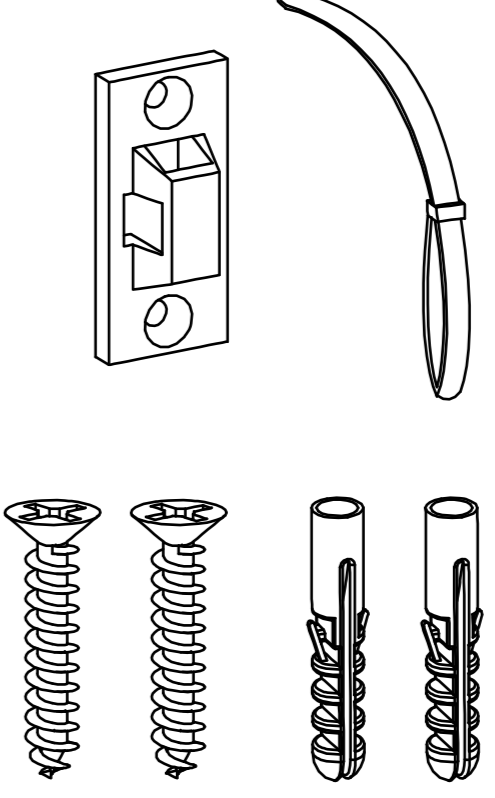


NO.	A	B	C	D	E	F	G	H
Name	Wire Shelf	Wire Basket	Lower Pole	Upper Pole	Right slide rail	Left slide rail	Plastic Clip	Leveling Foot
Parts								
Quantity	3PCS	3PCS	4PCS	4PCS	3PCS	3PCS	48PCS	4PCS

Assembly Steps:

⑦ It' s recommended to install the included anti-tip device for safety.



No.	1
Name	Anti-Tip Device
Parts	
Quantity	2SETS